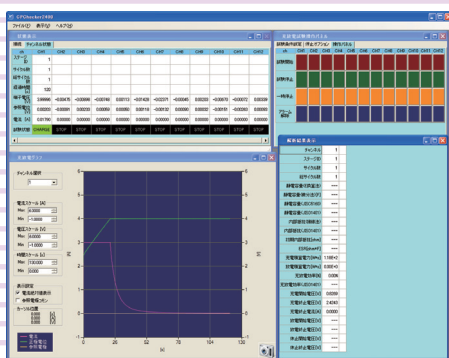


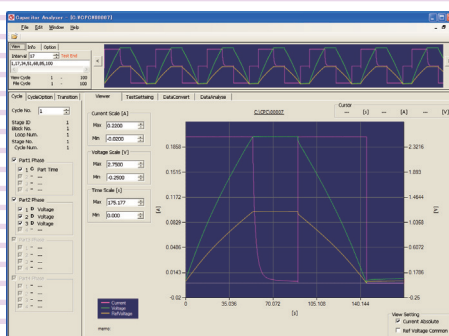
Setup Guide

Application Software

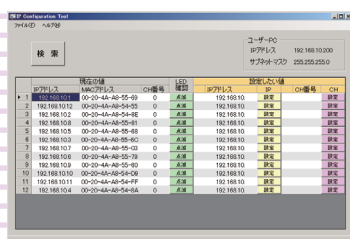
SD008-PFX2400



**CPCChecker2400
Ver. 3.x**



**CPCChecker2400 Plus
Ver. 3.x**



IPアドレス	ステータス
192.168.1.1	正常
192.168.1.2	正常
192.168.1.3	正常
192.168.1.4	正常
192.168.1.5	正常
192.168.1.6	正常
192.168.1.7	正常
192.168.1.8	正常
192.168.1.9	正常
192.168.1.10	正常
192.168.1.11	正常
192.168.1.12	正常

**IP Configuration Tool
Ver. 1.x**

Overview	3
Features	4
System requirements	5
Package contents	6
Available manuals	6
Operating precautions	6
Setup	7
Before installation	7
Inserting the CD-ROM into the drive	7
Installing the SD008-PFX2400	8
Starting the SD008-PFX2400	9
Viewing the operation guide	10

Thank you for purchasing the SD008-PFX2400.

About This Manual

This manual is intended for first-time users of the SD008-PFX2400. It provides an overview of the product and notes on usage. It also explains how to install it, how to start it, and so on.

After you have finished reading this manual, store it so that you can use it for reference at any time.

If you find any misplaced or missing pages in this manual, it will be replaced.

If the manual gets lost or soiled, a new copy can be provided for a fee. In either case, please contact your Kikusui agent or distributor, and provide the "Part No." given on the cover.

Every effort has been made to ensure the accuracy of this manual. However, if you have any questions, or find any errors or omissions, please contact your Kikusui agent or distributor.

■ Product versions that this manual covers

This manual covers CPChecker2400 Ver. 3.x, CPChecker2400 Plus Ver. 3.x and IP Configuration Tool Ver. 1.x.

■ How to read this manual

This manual is designed to be read from beginning to end. We recommend that you read it thoroughly before using this product for the first time.

■ Intended readers of this manual

The manual is intended for users that will perform capacitor charge and discharge tests through the use of PFX2400 series capacitor testers. The guide is also intended for instructors that will train such users.

■ Trademarks

Microsoft and Windows are either registered trademarks or trademarks of Microsoft Corporation in the United States and/or other countries.

All other company and product names used in this manual are trademarks or registered trademarks of their respective owners.

■ Copyrights

The contents of this manual may not be reproduced, in whole or in part, without the prior consent of the copyright holder.

The specifications of this product and the contents of this manual are subject to change without prior notice.

© 2010-2012 Kikusui Electronics Corporation



Safety Precautions

Before you use CPChecker2400 for testing, thoroughly read through the PFX2400 Series Capacitor Tester Operation Manual, which covers hardware issues, and be sure to make connections and handle the capacitor tester properly. Improper connections or handling can lead to serious accidents, injury, and fire.

Notations Used in This Manual

- In this manual, the PFX2400 series capacitor tester is sometimes referred to as the "PFX2400 Series" or the "PFX2400."
- The term "PC" is used to refer generally to both personal computers and workstations.
- The following markings are used in the explanations in the text.



CAUTION

Indicates a potentially hazardous situation which, if ignored, may result in damage to the product and other property.



NOTE

Indicates information that you should know.



See

Indicates a reference to detailed information.

Overview

The SD008-PFX2400 package contains the following three software applications.

- CPChecker2400
- CPChecker2400 Plus
- IP Configuration Tool

CPChecker2400 (Capacitor Performance Checker for PFX2400) is a software application that you use to (1) create test conditions for capacitor cycle tests, voltage hold tests, and charge-discharge efficiency tests and (2) execute these tests on Kikusui's PFX2400 Series capacitor testers.

The operation panel contains separate controls for each channel so you can execute different tests on each channel. The Test Setting window has preset options for JIS D 1401 and JIS C 5160. These options enable you to easily set capacitor test conditions according to the JIS standards. Test conditions are saved to text files in CSV format so you can open them using a spreadsheet or a similar application.

CPChecker2400 Plus is a software application that can be used to convert test data created with CPChecker2400 to graph data. These graphs can be displayed on the screen and printed.

In addition to displaying test data graphs, CPChecker2400 Plus can also be used to display the values of test data, electrostatic capacity and other values calculated from test data, and test conditions. This makes it possible to analyze data in a variety of ways.

IP Configuration Tool is a software application used to assign IP addresses and channel numbers to Kikusui PFX2400 Series capacitor testers.

Features

■ CPChecker2400

- Multi-channel control¹
- Channel number assignment
- Test condition configuration and saving
- Test start, stop, rest, and alarm reset
- Test result display
- Test result file creation and saving (CSV format)
- Measured value monitoring (charge and discharge current, terminal voltage, and reference electrode potential)
- HOVP/HUVP voltage display
- Rest hold

■ CPChecker2400 Plus

- Display graphs of each test cycle and display graphs overlaid on top of each other.
- Display test data acquired by CPChecker2400.
- Display and print transition graphs of all cycles.
- Recalculate the initial internal resistance and internal resistance by changing the calculation conditions.

■ IP Configuration Tool²

The IP addresses³ and channel numbers on a PFX2400 Series Capacitor Tester can be changed to values that are within the following ranges.

- IP addresses: 192.168.0.0 to 192.168.255.254
- Channel numbers: 0 to 256

1 The number of channels that can be controlled varies depending on the data acquisition interval. For example, if the test cycle is 600 s, up to 96 channels can be controlled under the following conditions.

- ΔV : 0.5 % of the charge-discharge voltage
- ΔI : 0.5 % of the charge-discharge current
- ΔT : 10 s

The maximum number of channels that can be displayed on a page is 12.

2 If you are using only one PFX2400, you don't need to use IP Configuration Tool.

3 Even when you don't use IP Configuration Tool, you must set the IP address and the subnet mask of the PC that you are running CPChecker2400 on to values that are within the PFX2400 IP address range.

System requirements

To install and use the SD008-PFX2400, you need the following hardware and software.

■ CPChecker2400 and CPChecker2400 Plus

- PC running Microsoft Windows XP Service Pack 3 or later, Windows Vista, or Windows 7
- Microsoft Windows Installer 3.1 (may need to be installed on Windows XP; included on the CD)
- Microsoft .NET Framework 3.5 SP1 (included on the CD)
- Microsoft Chart Controls for Microsoft .NET Framework 3.5 (included on the CD)
- 2 GB or more of memory
- Monitor with a resolution of 1280 x 1024 dots or higher
- 100 MB or more of free hard disk space (the amount of additional space that is needed depends on the type of data you need to save)
- CD-ROM drive
- Mouse or other pointing device
- 10BASE-T or 100BASE-TX LAN port

■ IP Configuration Tool

- PC running Microsoft Windows XP Service Pack 3 or later, Windows Vista, or Windows 7
- Microsoft Windows Installer 3.1 (may need to be installed on Windows XP; included on the CD)
- Microsoft .NET Framework 3.5 SP1 (included on the CD)
- 256 MB or more of memory
- Monitor with a resolution of 1024 x 768 dots or higher
- CD-ROM drive
- Mouse or other pointing device
- 10BASE-T or 100BASE-TX LAN port

■ Other items

- LAN cables (the number of straight cables required is the number of PFX2400 channels that you want to use and one straight cable for the PC)¹
- Switching hub (the minimum number of ports required is the number of PFX2400 channels that you want to use and one port for the PC)
- PFX2400 Series
- Adobe Reader 6 or later (required to view the PDF version of the operation guide)

¹ If you only need to use one channel without a switching hub, you can connect the PFX2400 Series directly to a PC using a crossover LAN cable.

Package contents

The SD008-PFX2400 package contains the following items.

Name	Quantity
Program CD-ROM	1
SD008-PFX2400 Setup Guide	1

Available manuals

In addition to the setup guide (this manual), the SD008-PFX2400 contains the following manual.

 p. 10

- Operation guide (electronic manual)
This manual explains how to use each software application. The manual is @provided in two versions: HTML help and PDF. For instructions on how to view the operation guide, see “[Viewing the operation guide.](#)”

Operating precautions

CPChecker2400 is used to acquire PFX2400 test data on your PC. To ensure that data is acquired correctly during testing, disable the following features on your PC.

- The operating system’s energy saving mode
- Screen saver
- Memory resident programs

During testing, avoid operating other software applications.

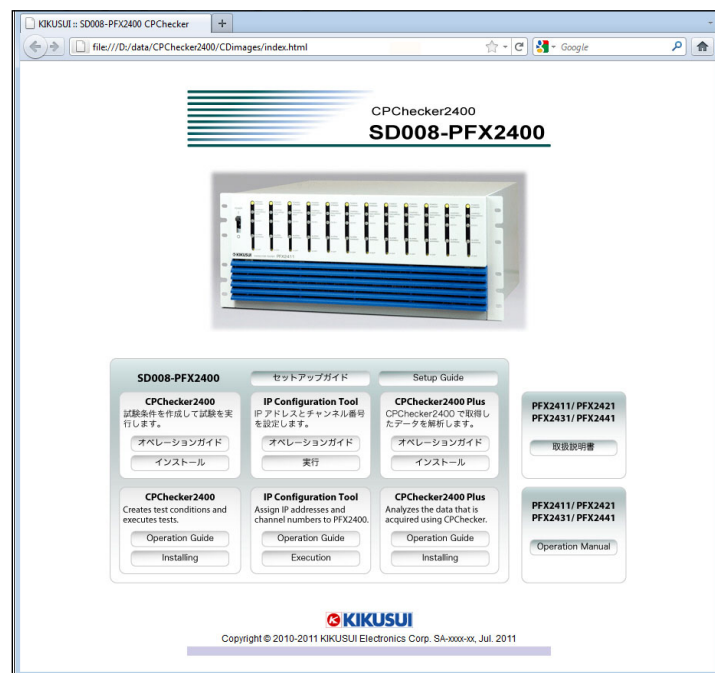
Setup

Before installation

- You need to log on as an administrator to install the software applications.
- Close all software applications running on your PC. The software may not be installed properly if virus protection software is running. Disable virus protection software until the installation is complete.

Inserting the CD-ROM into the drive

Insert the program CD-ROM into the drive. After a few seconds, a menu program window appears. If the window does not appear, open the CD-ROM in Windows Explorer, and then double-click index.htm to start the menu program.



Menu program window

Installing the SD008-PFX2400

CPChecker2400

If you don't install the following software in order that they are listed, the programs may not run. Be sure to follow the installation procedure.

- Microsoft Windows Installer 3.1 (WinXP)
- Microsoft.NET Framework 3.5 SP1
- Microsoft Chart Controls for Microsoft .NET Framework 3.5
- CPChecker2400

NOTE

You do not need to install Microsoft Windows Installer 3.1 on Windows Vista or Windows 7. If you attempt to do so, an error will occur.

1 In the menu program window, click "Installing" of "SD008-PFX2400 CPChecker2400."

Then, follow the instructions on the screen to install it.

CPChecker2400 Plus

To install CPChecker2400 Plus on a different PC from the one that you have installed CPChecker2400 on, you have to install the Microsoft .NET Framework and the other software listed above on the different PC.

1 In the menu program window, click "Installing" of "CPChecker2400 Plus."

2 Double-click "Setup SD008Plus.msi."

Then, follow the instructions on the screen to install it.

IP Configuration Tool

IP Configuration Tool is run directly from the CD-ROM so you don't need to install it.

Starting the SD008-PFX2400

CPChecker2400

- 1 On the task bar, click **Start > All Programs > Kikusui SD008-CPC > CPChecker2400**.

CPChecker2400 Plus

- 1 On the task bar, click **Start > All Programs > Kikusui SD008-CPC > CPChecker2400 Plus**.

IP Configuration Tool

When you need to use IP Configuration Tool, start it from the CD-ROM.

- 1 In the menu program window, click **"Execution" of "IP Configuration Tool."**
The file "IP Configuration Tool.exe" on the CD-ROM appears.
- 2 Double-click **"IP Configuration Tool.exe" to execute it.**
The following window appears.

If you want to run IP Configuration Tool from your PC's hard disk, copy the IpConfig folder in the CD-ROM to an appropriate location on the hard disk.

Viewing the operation guide

The operation guide explains how to use each software application.

■ HTML help

In each software application, click Contents on the Help menu.

■ PDF operation guides

You can print the PDF versions of the operation guides if necessary.

- CPChecker2400 On the task bar, click Start > All Programs > Kikusui SD008-CPC > CPChecker2400 Operation Guide.
- CPChecker2400 Plus On the task bar, click Start > All Programs > Kikusui SD008-CPC > CPChecker2400 Plus Operation Guide.
- IP Configuration Tool In the menu program window, click "IP Configuration Tool Operation Guide."
If you copied the IpConfig folder to your PC, double-click "IP Configuration Tool Operation Guide.pdf" in the folder.